



Doğan İnşaat

INDEX

PREFACE

USED STANDARTS

ORGANIZATION BODY

MACHINARY AND EQUIPMENTS

COMPLETED PROJECT BETWEEN 2021-2013

COMPLETED PROJECT BETWEEN 2013-1995

CERTIFICATES

PHOTOS



ABOUT US

Over **35** years, **DOGAN Constructions** Company has signed more than two hundred project of succesful operations in so many construction in Buildings, Roads, Tunnels, Infrastruture, Bridges, Intersection and gained the rightfuil appreciation of the customrs with its quality and experiance. Our Mission; Providing your expectations in the best condition, Having fully Customer Satisfaction,be your solution partner.

Our Vision; be a respected and reliable company, providing services at international quality standards, developing strategies on growth potential, reaching the target, respecting the environment and people.

DOGAN Costruction company will carry an expanding with the conscious of its corporate and social responsibility with the investments that it will make in new sectors to globalization take a share in meeting the requirement of the Turkish and World economy that rapidly develops and varies as parallel to.

Rasim DOĞAN
Chairman of the Board



DIFFERENT STANDARTS

Used in the Projects

1. Ministry of Public Works, Highway Department Technical Specification
2. ASTM Standarts (American Society for Testing and Materials)
3. TSE (Turkish Standart Institute)

☆☆☆

PROCESSES

- Close Coordination With Client
- Planning and Preparation of Work Programme
- Weekly Meeting on Progress Reports
- Montly Review and Progress Meeting
- Design Review
- Implantation of QA/ QC
- Quality Procedures
- On the Job Training
- Performance Criterius
- Cost Control Meeting
- Quotation Technical Evaluation System

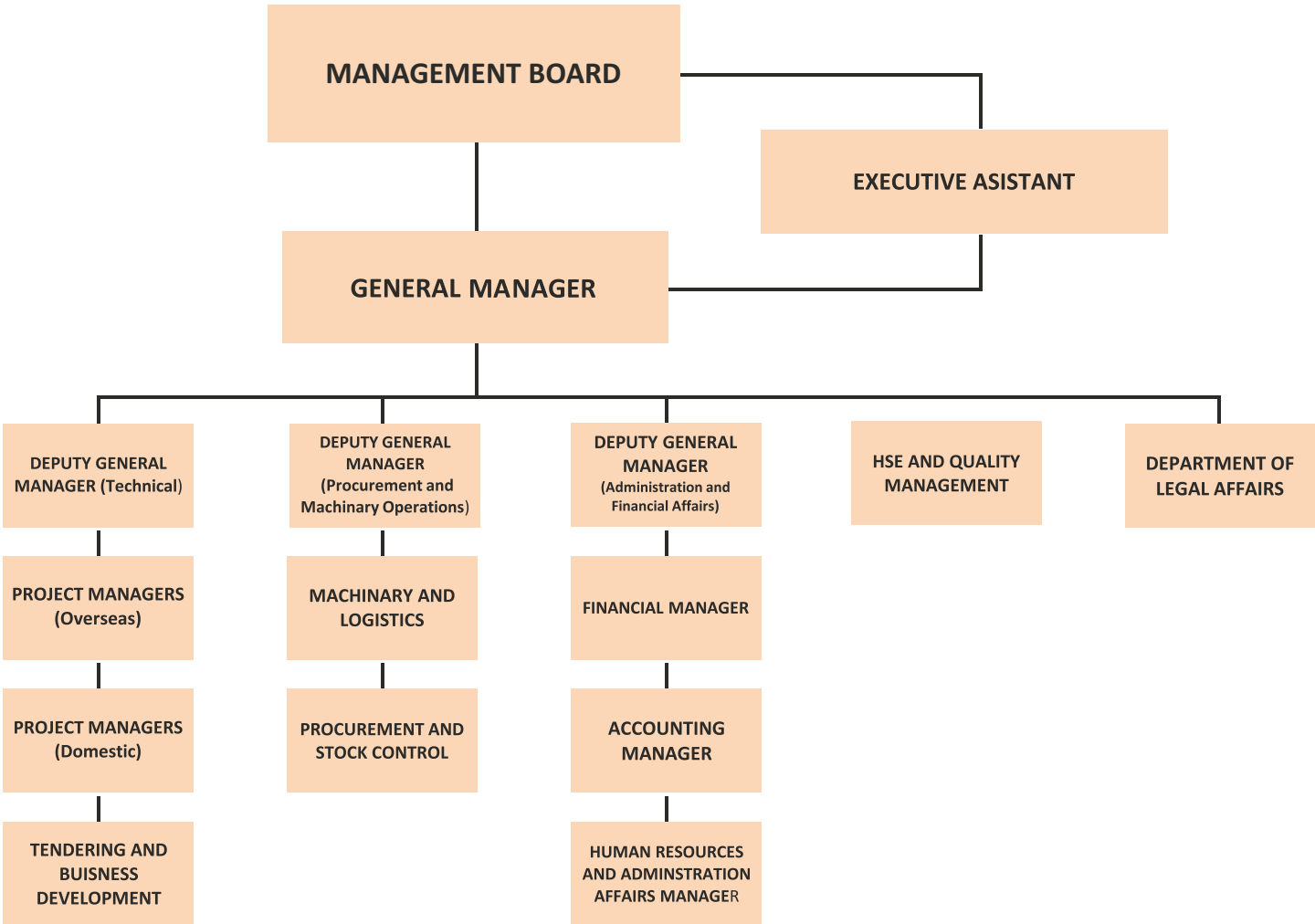
☆☆☆

MANAGEMENT BODY

- Critical Success Factors
- "0" Work Accident
- Devotion and Participation of Staff
- Prevention of Reoccurrence
- Being Customer Oriented and flexible
- Being Informed About new Management and Engineering Techiques



DOGAN CONSTRUCTION ORGANIZATION CHART



**DOGAN
CONSTRUCTION
MACHINERY
AND
EQUIPMENT**



MACHINERY AND EQUIPMENT LIST

ITEM	DESCREPTION	TYPE&MADE	CAPACITY	YEAR	QUANTITY	TOTAL QNTY
A	HOTMIX ASPHALT PLANTS					4
1	ASPHALT BATCH PLANT	PARKER	240 TON/HOUR	2005	1	
2	ASPHALT BATCH PLANT	DOĞAN MACHINARY	220 TON/HOUR	2006	1	
3	ASPHALT BATCH PLANT	PARKER	300 TON/HOUR	2012	1	
4	ASPHALT BATCH PLANT	PARKER	320 TON/HOUR	2013	1	
B	BITUMEN MODIFICATION PLANTS					2
1	BITUMEN MODIFIED PLANT	ZENTAŞ	16 TON/HOUR	2015	1	
2	BITUMEN MODIFIED PLANT	TEKNO	12 TON/HOUR	2011	1	
C	BİTUMEN EMULSION PRODUCTION PLANT					1
1	EMULSION PLANT	TEKNO	8 TON/HOUR	2008	1	
D	COLD-MIX PRODUCTION PLANT					3
1	BASE-SUBBASE COURSE PRODUCTION PLANT	DOGAN MACHINARY	600 TON/HOUR	2010	1	
2	BASE-SUBBASE COURSE PRODUCTION PLANT	ZENTAŞ	600 TON/HOUR	2012	1	
3	BASE-SUBBASE COURSE PRODUCTION PLANT	UĞUR MAKİNA	600 TON/HOUR	2019	1	
E	CONCRETE PRODUCTION PLANT					3
1	CONCRETE PRODUCTION PLANT	Pİ MAKİNA	90 M3/HOUR	2011	1	
2	CONCRETE PRODUCTION PLANT	SEMİX	130 M3/HOUR	2011	1	
3	CONCRETE PRODUCTION PLANT	VUR-MAK	140 M3/HOUR	2006	1	
F	STONE CRUCHER&SCREEN PLANTS					3
1	CRUCHER SET(JAW CRUCHER,IMPACTOR,WSI)	KENSAN	400 TON/HOUR	2013	1	
2	MOBILE CRUCHER SET	GTM	180 TON/HOUR	2014	1	
3	MOBILE SCREEN PLANT FOR SURFACE DRESSING	DOĞAN MAK	80 TON/HOUR	2009	1	
G	SOIL WORKS MACHINARY &EQUIPMENT					23
	BULDOZER					2
1	BULLDOZER	CATERPILLAR D8	400 HP	2007	1	
2	BULLDOZER	KOMATSU D155	260 HP	2003	1	
	EXCEVATOR - BACKHO LOADER &ATTACHMENT					10
3	CRAWLER EXCEVATOR	HİTACHY ZX 300	225 HP	2016	2	
4	CRAWLER EXCEVATOR	HİTACHY ZX 350	386 HP	2013	2	
5	CRAWLER EXCEVATOR	HITACHY ZX 475	450 HP	2014	1	
6	WEEL EXCEVATOR	HOUNDAI R200W	164 HP	2011	1	
7	BACKHO-LOADER	HIDROMEK	95 HP	2016	1	
8	HYDRAULIC JACK-HAMMER 3 TON	MTB 285	3 TON	2014	2	
9	HYDRAULIC JACK-HAMMER 3 TON	D&A	2.5 TON	2008	1	
	MOTOR GRAIDER					2
1	GRAİDER	CAT 140M	200 HP	2006	1	
2	GRAİDER	GMG	240 HP	2011	1	
	HYDRAULIC ROCK DRILL					1
1	ROCK DRİL	FURUKOVA	260 HP	2006	1	



WHEEL LOADERS					6
1	WHEEL LOADERS	VOLVO L150	150 HP	2011	1
2	WHEEL LOADERS	VOLVO L120	120 HP	2011	1
3	WHEEL LOADERS	VOLVO L110	110 HP	2010	1
4	WHEEL LOADERS	VOLVO L90	90 HP	2011	1
5	WHEEL LOADERS	HITACHI ZW 250	250 HP	2010	1
6	WHEEL LOADERS	KAVASAKI 80 ZV	210 HP	2011	1
SKEED STEER LOADER					3
1	SKEED STEER LOADER	GHEEL	65HP	2008	1
2	SKEED STEER LOADER	GHEEL	65HP	2010	1
3	SKEED STEER LOADER	BOBCAT 250S	45HP	2009	1
H	CONCRETE MIXER & PUMPS				6
1	CONCRETE PUMP	PUTMAISTER	45M B	2006	1
2	CONCRETE MIXER 8X4	FORD	7 M3	2014	5
I	COLD TRIMMING MACHINE				2
1	COLD TRIMMING MACHINE	CATERPILLER	2 M WIDTH	2010	1
2	COLD TRIMMING MACHINE	CATERPILLER	2 M WIDTH	2012	1
J	PAVER & ATTACHMENT				8
	PAVER WITH AUTOMATIC GRADE &SLOPE CONTROL	WOGELE 1900-3	8.5 M	2019	2
	PAVER WITH AUTOMATIC GRADE &SLOPE CONTROL	WOGELE 1900-3	10 M	2019	1
	PAVER WITH AUTOMATIC GRADE &SLOPE CONTROL	WOGELE 1900-2	7.5 M	2010	1
	PAVER WITH AUTOMATIC GRADE &SLOPE CONTROL	WOGELE 2100 S	12 M	2011	1
	MULTIPLY SIDE FIXED SLOPE&GRADE CONTROL	FIXED TO WOGELE	13 M LENGTH	2019	3
K	ROLLER & COMPACTORS				18
	VIBRATORY ROLLER FOR SOIL WORKS	AMMAN 150	13 TON	2008	1
	VIBRATORY ROLLER FOR SOIL WORKS	AMMAN 150	13 TON	2011	1
	VIBRATORY ROLLER FOR SOIL WORKS	AMMAN 150	13 TON	2019	1
	VIBRATORY ROLLER FOR SOIL WORKS	AMMAN 110	12 TON	2008	1
	PNOMATIC WHEEL TYRED ROLLER	HAMM GRW15	24 TON	2019	2
	PNOMATIC WHEEL TYRED ROLLER	BOMAG BW24R	24 TON	2008	3
	VIBRATORY TANDEM ROLLER FOR ASPHALT	BOMAG 161 AD	11 TON	2011	1
	VIBRATORY TANDEM ROLLER FOR ASPHALT	BOMAG 151 AD	10 TON	2007	1
	VIBRATORY TANDEM ROLLER FOR ASPHALT	BOMAG 151 AD	10 TON	2011	1
	VIBRATORY TANDEM ROLLER FOR ASPHALT	BOMAG 202	11 TON	2017	1
	VIBRATORY ROLLER FOR PATCHING&JOINT	BOMAG 120	3 TON	2008	1
	PLATE TYPE COMPACTOR	MATSAN	50 X 55	2019	4
L	BITUMEN SPRAYER				2
	BITUMEN SPRAYER FIXED ON THE TRUCK	FORD	10 TON	2001	1
	BITUMEN SPRAYER FIXED ON THE TRUCK	FORD	10 TON	2006	1
M	PATCHING TRUCK WITH HOTBOX AND ROLLER				1
		FORD	12 TON	2011	
N	ROAD VACUUM SWEEPER TRUCK				2
	SWEEPER TRUCK	MERCEDES	4 M3	2021	1
	SWEEPER TRUCK	BMC	5 M3	2011	1
O	ASPHALT CUTTING MACHINE				3
		PALME	400 MM	2015	
P	FORKLIFT				1
		HELL	3 TON	2011	
Q	GEN-SET 500 KVA				2
		AKSA	500 KVA	2017	
R	TRUCK EQUIPPED WITH TIPPER &DUMPTRAILER				67
	DUMPTRUCK 8 X 4	FORD	30 TON	2015	7
	DUMPTRUCK 6 X 4	FORD	26 TON	2014	5
	DUMPTRUCK 8 X 4	FORD	30 TON	2017	2
	DUMPTRUCK 6 X 4	FORD	26 TON	2018	2
	TRUCK EQUIPPED WITH TIPPER TRAILER	SCANIA	36 TON	2018	1



	TRUCK EQUIPPED WITH TIPPER TRAILER	SCANIA	36 TON	2016	10
	TRUCK EQUIPPED WITH TIPPER TRAILER	SCANIA	36 TON	2015	5
	TRUCK EQUIPPED WITH TIPPER TRAILER	SCANIA	36 TON	2014	8
	TRUCK EQUIPPED WITH LOVBED TRAILER	MAN	50 TON	2011	2
	LOVBED TRAILER	ŞAHİN	45 TON	2012	1
	TIPPER TRAILER 25 M3	MEILLER	25 M3	2013	19
	TRUCK-TRACTOR FOR TRAILER 6X 4	SCANIA	45 TON	2014	5
S	WATER TANK- TRUCK-TRAILER				4
	WATER TANK-TRUCK	FORD	20 TON	2018	1
	WATER TANK-TRUCK	MERCEDES	20 TON	2003	1
	WATER TANK-TRUCK	FORD	20 TON	2002	1
	WATER TANK-TRUCK	ISUZU	15 TON	2013	1
T	FUEL TANK-TRUCK	BMC	20 TON	2005	1
U	PICK-UP SINGLE-DOUBLE CABINET	TOYOTA,FORD	3-5 TON		14
V	PASSENGER CAR-MINIBUS				10
	SURVEY EQUIPMENT				4
	LABORATORY SET (ASPHALT.SOIL &CONCRETE)				3



**DOGAN CONSTRUCTION
COMPLETED PROJECT
BETWEEN
2013 - 2021**



DOĞAN CONSTRUCTION COMPANY
COMPLETED PROJECT (BETWEEN 2013-2021)

EMPLOYER	PROJECT NAME AND DESCRIPTION	CONTRACT DATE	COMPLETE DATE	PROJECT EVALUATION VALUE IN (TL)	PROJECT VALUE IN (USD) DOLLARS
DIRECTORATE OF HIGHWAY - DISTRICT 6 MANAGMENT	CONSTRUCTION OF DEVELİ RİNG ROAD BETWEEN KM:33+000-41+044,59 STARTED FROM HISARCIK CONNECTION	11.08.2016	30.09.2021	185.626.330,73	\$62.667.138,43
ERG CONSTRUCTION A.Ş.	ANKARA-NİĞDE MOTORWAY(BOT) PROJECT. SOIL WORKS,ENGINEERING STRUCTURE WORKS,DİTCHES AND DRAIN WORKS,PAVEMENT WORKS(CRUCHED STONE SUBBASE AND BASE COURSE,BITUMEN BASE,BINDER BASE AND STONE MASTIC ASPHALT WEARING COURSE) AT KM:46+300-72+800	26.03.2019	31.12.2020	173.667.411,96	\$31.607.500,58
KADIKÖY Municipality	Construction New Asphalt Layers in city Roads.	22.04.2019	31.12.2020	13.060.515,10	\$2.377.016,13
ÜSKÜDAR Municipality	Construction New Overlay Asphalt Works..	20.05.2020	31.12.2020	3.798.724,46	\$691.368,54
DIRECTORATE OF HIGHWAY	6.Bl.Hd.-Yıldızeli-Sivas-Hafik HIGHWAY- INTERCHANGE BRIDGE IN FRONT OF SİVAS HOSPİTAL AND OVERPASSING BRIDGES CONSTRUCTION AT TWO LOCATION	02.09.2015	31.03.2019	30.080.289,89	\$10.231.391,12
DIRECTORATE OF HIGHWAY - DISTRICT 6 MANAGMENT	(SORGUN-AKDAĞMADENİ) AYR-ÇİGDEMLİ-KADIŞEHRİ STATE ROAD-REHABİLİTAION PAVEMENTS WORKS AT KM:0+580-8+100	30.07.2016	31.12.2019	68.733.990,80	\$22.816.262,51
SANCAKTEPE Municipality	Construction New Overlay Asphalt Layres in City Roads.	31.01.2018	31.12.2018	9.003.081,65	\$2.988.574,82
DIRECTORATE OF HIGHWAY - DISTRICT 13 MANAGMENT	KALKAN FETHİYE 23.BL HD.ROADS(KM:32+800-63+000) - SOİL,CONCRETE ENGINEERING STRUCTURE AND PAVEMENT WORKS	29.07.2016	21.07.2017	94.505.399,72	\$31.371.087,05
TURKUAZ-GÜNEŞ GROUP	152 HOUSES,3 TOVERS WITH INFRASTRUCTURE PROJECT	16.11.2015	02.10.2017	19.138.230,00	\$6.352.939,42
ÇANAKKALE Municipality	Construction New Asphalt Layers in city Roads.	04.04.2017	18.10.2017	14.591.237,20	\$4.843.564,22
BİGA Municipality	Construction New Overlay Asphalt Layres in City Roads.	13.05.2016	15.06.2017	12.767.655,12	\$4.238.225,77
FETHİYE Municipality	Providing Coldmix(Cruched Stone Basecourse)	10.03.2017	31.12.2017	3.269.896,18	\$1.085.442,72
DEVELİ Municipality	Trimming of Existing Pavement, overlaying new wearing course works.	19.06.2017	21.11.2017	5.581.323,73	\$1.852.721,57
DIRECTORATE OF HIGHWAY	Kalkan-Fethiye-2.Bl.Hd. Highway (Section between Km:32+280-63+000) Various Earth Works,Engineering Structure(box culvert and bridge), Gökçeovacık Interchange Bridge with Connections road, construction of Tunnel with 900 meter length in Gocak (including electrical,ventilation and tunel control system) & Uperstructure asphalt pavement works.	05.07.2013	04.10.2016	295.417.901,27	\$151.698.624,46



DIRECTORATE OF HIGHWAY	ERCİYES WINTER SPORT WILLAGE - CONSTRUCTION OF CONNECTION ROADS	05.12.2012	31.12.2016	179.513.516,83	\$101.054.670,58
DIRECTORATE OF HIGHWAY	Kalkan – Fethiye – 2.Bl.Hd. City road at (Km: 0+000-32+280) -Soil,Engineering Structures (Box Culverts and Bridge)and Pavement works.	24.05.2013	03.08.2016	124.911.484,77	\$67.765.141,20
DIRECTORATE OF HIGHWAY	Fethiye-Yeşilüzümlü State Road (Km=0+000-4+500) Soil Works,Concrete Culverts works and Pavement works(subbase,basecourse layers and asphalt pavements)	06.07.2015	29.09.2016	25.032.318,57	\$9.306.040,58
DIRECTORATE OF HIGHWAY	Hotmix Asphalt Patching,Cracks Repair,and Surface Dressing works at all willage roads of city Çanakkale	26.04.2016	26.10.2016	13.276.594,98	\$4.683.928,38
BİGA Municipality	Construction New Asphalt Layers in city Roads.	02.06.2015	21.01.2016	8.055.006,91	\$2.841.773,47
ÇAN Municipality	Construction New Overlay Asphalt Layres in City Roads.	30.01.2015	13.07.2015	10.381.888,40	\$5.064.335,80
ÇANAKKALE Municipality	Patching works	16.06.2015	16.10.2015	5.620.857,32	\$2.741.881,62
BİGA Municipality	Construction New Asphalt Layers in city Roads.	04.08.2014	03.06.2015	4.984.810,81	\$2.431.615,03
DIRECTORATE OF HIGHWAY - DISTRICT 6 MANAGMENT	Sarıkaya City İnterchange Project - Engineering Concrete Structure and Pavements works at Km:71+150-77+173,23	12.04.2013	31.08.2014	20.120.456,22	\$11.251.163,80
ÇAN Municipality	Construction New Asphalt Layers in city Roads.	13.05.2014	16.12.2014	13.277.070,89	\$7.424.409,15
ÇAN Municipality	Construction Overlay Asphalt Layres in City Roads.	07.10.2013	15.11.2013	9.995.826,19	\$6.059.178,15
ÇAN Municipality	Construction New Asphalt Layers in city Roads.	07.08.2013	06.10.2013	11.051.973,96	\$6.699.384,11
DIRECTORATE OF HIGHWAY - DISTRICT 6 MANAGMENT	Kayseri Sivas HIGHWAY (SECTION 3) SOİL ENGINEERING STRUCTURES(BOX CULVERT,DİTCHES , BRİDGE) AND ASPHALT PAVEMENT WORKS BETWEEN Km:30+000 58+500	20.07.2011	31.10.2013	52.653.028,43	\$31.916.729,36
DIRECTORATE OF HIGHWAY - DISTRICT 13 MANAGMENT	Isparta Baladız Highway Road-soil,BOX AND PIPE CULVERTS structure and asphalt pavement works at km Km:16+000-34+000	20.10.2011	31.10.2013	97.255.531,36	\$52.338.570,31
DIRECTORATE OF HIGHWAY - DISTRICT 6 MANAGMENT	Kayseri – Sivas Highway - Soil ,Engineering Structure and Pavement works between km 6+000-30+000	01.08.2011	07.11.2013	113.284.157,01	\$67.960.979,67



**DOGAN CONSTRUCTION
COMPLETED PROJECT
BETWEEN
1995 - 2013**



DOĞAN CONSTRUCTION COMPANY
COMPLETED PROJECT (Between 1995-2013)

EMPLOYER	WORK DESCRIPTION	CONTRACT DATE	COMPLETED DATE	CONTRACT VALUE	CONTRACT EVALUATION VALUE İN 2020
İSTANBUL Metropolitan Municipality İSFALT	Trnasportation of Agregatte and Hotmix	13.07.1995	17.11.1995	6.871,52	3.616.206,65
İSTANBUL Metropolitan Municipality İSFALT	Trnasportation of Agregatte and Hotmix	14.05.1996	10.12.1996	9.627,58	1.727.753,24
İSTANBUL Metropolitan Municipality İSFALT	Trnasportation of Hotmix	28.04.1997	31.12.1997	57.250,35	5.945.433,92
ZEYTİNBURNU Municipality	Hotmix pavement works	22.05.1998	31.12.1998	176.000,00	3.171.174,04
ZEYTİNBURNU Municipality	Hotmix pavement, bordure, sidewalk construction works	26.01.1999	29.06.1999	52.000,00	2.301.857,25
ZEYTİNBURNU Municipality	50.000 Ton Trnasportation of Hotmix	08.05.2000	16.08.2000	48.280,43	1.128.756,37
ZEYTİNBURNU Municipality	Hotmix pavement works	24.01.2001	31.12.2002	195.000,00	3.996.584,52
ZEYTİNBURNU Municipality	Construction of Sidewalk, Bordure, Asphalt Layer and Interlocking Stone Pavement	13.03.2002	31.10.2002	325.000,00	3.304.608,85
ZEYTİNBURNU Municipality	Construction of Sidewalk, Bordure, Asphalt Layer and Interlocking Stone Pavement	13.03.2002	31.10.2002	215.800,00	2.194.260,27
GEBZE BELEDİYE Municipality	Sultan Orhan ,construction of parking area	21.11.2002	30.04.2003	168.983,80	1.484.262,98
GEBZE BELEDİYE Municipality	30.000 Ton Trnasportation of Hotmix	14.08.2002	31.12.2003	84.368,61	793.200,62
ZEYTİNBURNU Municipality	Patching and Pavement works	22.11.2002	17.10.2003	300.000,00	2.635.038,95
ZEYTİNBURNU Municipality	Patching and Pavement works	01.12.2003	31.12.2003	297.025,00	2.177.575,21
GEBZE BELEDİYE Municipality	100.000 Ton Trnasportation of Hotmix	07.07.2003	07.12.2004	236.999,03	1.764.933,63
GEBZE BELEDİYE Municipality	100.000 Ton Trnasportation of Hotmix	12.08.2003	07.12.2004	170.382,80	1.275.677,74
AVCILAR Municipality	Hotmix pavement works	22.08.2003	31.12.2003	1.109.491,35	8.306.903,14
BAĞCILAR Municipality	Manhole cutting and lifting works	15.08.2003	13.01.2004	118.250,00	885.352,82
ZEYTİNBURNU Municipality	Patching and Pavement works	30.01.2004	31.12.2004	271.195,35	1.975.821,71
ZEYTİNBURNU Municipality	Trnasportation of 100.000 Ton coldmix	30.01.2004	07.12.2004	371.919,57	2.709.658,41
GEBZE Municipality	Trnasportation of 80.000 Ton coldmix	20.01.2004	12.08.2004	192.844,80	1.404.990,69
ESENLER Municipality	Hotmix pavement works	30.07.2004	17.12.2004	278.437,50	1.875.984,47
ZEYTİNBURNU Municipality	Trnasportation of Agregatte and Hotmix	03.02.2005	31.12.2005	237.998,93	1.536.967,74
GEBZE Municipality	Trnasportation of 150.000 Ton coldmix	02.03.2005	31.12.2005	253.607,09	1.638.127,19
ZEYTİNBURNU Municipality	Manhole cutting, lifting and levelling works	16.05.2005	16.06.2005	92.895,00	575.907,39
ZEYTİNBURNU Municipality	Manhole cutting, lifting and levelling works	01.06.2005	10.10.2005	245.735,00	1.528.342,67
GEBZE Municipality	Hotmix Production 125.000 Ton	20.06.2005	23.06.2007	1.183.750,00	7.362.303,42
K.ÇEKMECE Municipality	100.000 Ton Trnasportation of Hotmix	30.06.2005	28.12.2005	484.535,10	2.966.198,39



GEBZE Municipalityl	125.000 Ton of Hotmix pavement works	19.07.2005	23.06.2007	1.249.225,00	7.743.100,28
ZEYTİNBURNU Municipality	Hotmix pavement, bordure, sidewalk construction wors	10.10.2005	25.01.2006	96.412,27	579.360,59
ZEYTİNBURNU Municipality	Hotmix pavement, bordure construction wors	17.10.2005	15.02.2006	217.715,00	1.308.292,92
ZEYTİNBURNU Municipality	Trimming and Pavement works	09.11.2005	15.03.2006	219.879,63	1.312.666,58
Z.BURNU BELEDİYE BAŞKANLIĞI	Rental and operation of Heavy Equipment	31.01.2006	31.12.2007	283.800,00	1.737.342,19
ZEYTİNBURNU Municipality	Construction of Sidewalk, Bordure, Asphalt Layer and Interlocking Stone Pavement	21.02.2006	01.11.2006	349.026,38	2.095.566,40
GAZİOSMANPAŞA Municipality	100.000 Ton of Hotmix pavement works	10.05.2006	24.12.2006	2.388.807,14	13.998.958,10
KOCAELİ Metropoliton Municipalityl	Pavement works	25.05.2006	29.09.2006	1.377.686,80	8.073.560,84
ZEYTİNBURNU Municipalityl	Pavement works	13.09.2006	26.10.2006	154.900,00	848.197,64
G.O.PAŞA Municipalityl	22.500 Ton Hotmix pavement, bordure construction wors	02.11.2006	31.12.2006	327.500,00	1.789.390,55
ZEYTİNBURNU Municipalityl	Road pavement works	23.11.2006	31.12.2006	60.052,00	328.111,39
İSTANBUL Metropoliton Municipality İSFALT	Winter and renting winter maintenance equipment	01.12.2006	31.03.2007	642.996,00	3.523.477,49
İSTANBUL Metropoliton Municipality İSFALT	Winter and renting winter maintenance equipment	01.12.2006	31.03.2007	755.989,40	4.142.656,62
KOCAELİ Metropoliton Municipalityl	Pavement works	15.12.2006	30.11.2007	1.723.545,00	9.444.649,75
KOCAELİ Metropoliton Municipalityl	Pavement works	15.12.2006	30.11.2007	1.718.725,00	9.418.237,21
ZEYTİNBURNU Municipalityl	Trnsportation works	08.01.2007	31.12.2007	583.198,30	3.199.779,76
ZEYTİNBURNU Municipalityl	Construction of Sidewalk, Bordure, Asphalt Layer and Interlocking Stone Pavement	26.01.2007	29.05.2007	411.850,00	2.259.659,01
KÜÇÜKÇEKMECE Municipalityl	Pavement works	26.04.2007	31.12.2007	1.821.872,86	9.811.829,51
GEBZE Municipalityl	75.000 Ton Hotmix pavement, bordure construction wors	24.05.2007	17.12.2007	2.312.733,42	12.356.730,57
ZEYTİNBURNU Municipalityl	Demolotion of Existing Building	09.08.2007	08.09.2007	22.000,00	117.134,46
ZEYTİNBURNU Municipalityl	Pavement works	10.10.2007	25.12.2007	315.000,00	1.646.247,06
ZEYTİNBURNU Municipalityl	Hotmix pavement, bordure construction wors	02.01.2008	02.07.2008	598.325,00	3.098.621,92
ZEYTİNBURNU Municipalityl	Trnsportation works	02.01.2008	31.12.2008	904.560,00	4.684.560,13
ZEYTİNBURNU Municipalityl	Hotmix pavement, bordure construction wors	07.08.2008	31.12.2008	596.517,40	2.682.207,82
KOCAELİ Metropoliton Municipalityl	Trimming and Pavement works	03.06.2008	31.12.2008	1.377.500,00	2.000.792,82
KOCAELİ Metropoliton Municipalityl	Pavement works	19.11.2008	19.01.2009	661.000,00	3.053.384,82
ZEYTİNBURNU Municipalityl	Trnsportation	23.12.2008	30.06.2009	499.920,00	2.310.013,53



GEBZE Municipalityl	Hotmix pavement, bordure construction wors	22.04.2008	29.07.2009	6.855.753,13	33.413.105,24
ZEYTİNBURNU Municipalityl	Hotmix pavement, bordure construction wors	10.02.2009	25.08.2009	753.450,00	3.601.086,73
BAŞAKŞEHİR Municipalityl	Hotmix pavement, bordure construction wors	22.07.2009	25.08.2009	110.131,37	162.471,44
BAŞAKŞEHİR Municipalityl	Trnsportation of coldmix	25.08.2009	01.09.2009	56.448,00	263.714,04
BAŞAKŞEHİR Municipalityl	Patching and maintenance	24.09.2009	12.10.2009	467.410,80	2.174.560,87
ZEYTİNBURNU Municipalityl	Trnsportation	01.07.2009	31.12.2009	547.500,00	2.539.747,48
ZEYTİNBURNU Municipalityl	Construction of Sidewalk, Bordure, Asphalt Layer and Interlocking Stone Pavement	26.08.2009	31.03.2010	676.800,00	3.161.877,55
KOCAELİ Metropolition Municipalityl	Pavement works	28.08.2009	27.04.2010	1.536.345,97	7.177.508,61
KÜÇÜKÇEKMECE Municipalityl	Pavement works	24.07.2009	31.08.2010	2.207.449,47	10.239.934,65
ZEYTİNBURNU Municipalityl	Rental and operation of Heavy Equipment	07.12.2009	31.12.2010	988.830,00	4.501.096,03
ZEYTİNBURNU Municipalityl	Hotmix pavement, bordure construction wors	27.04.2010	31.12.2010	713.500,00	3.095.375,10
ZEYTİNBURNU Municipalityl	Ladscaping	22.11.2010	21.01.2011	280.442,40	1.180.129,00
ZEYTİNBURNU Municipalityl	Construction of Sidewalk, Bordure, Asphalt Layer and Interlocking Stone Pavement	03.01.2011	20.12.2011	746.994,00	3.102.715,33
ZEYTİNBURNU Municipalityl	Pavement works	03.05.2012	17.10.2012	1.837.200,00	6.684.740,46



DOGAN CONSTRUCTION ONGOING PROJECT



ONGOING PROJECT

#	Employer	Description	Date of Contract	Contract Amount
1	HIGHWAYS 6TH REGIONAL DIRECTORATE / KAYSERİ	HİSARCIK AYR-DEVELİ KM33+000-41+044,59 İKMAL; DEVELİ NORTH HIGHWAY CONSTRUCTION WORKS	11.8.2016	80.000.000,00
2	HIGHWAYS 14TH REGIONAL DIRECTORATE	ÇAN-YENİCE-BALYA (YENİCE BALYA ARASI) KM:85+000- 135+300 EARTHWORKS, ART WORKS, SUPERSTRUCTURE, BRIDGE WORKS CONSTRUCTION	9.2.2018	73.793.000,00
3	KADIKÖY MUNICIPALITY DIRECTORATE	KADIKÖY MUNICIPALITY YEAR 2019 - ASPHALT COATING AND PATCHING WORK	22.4.2019	8.684.375,00
4	HIGHWAYS 6TH REGIONAL DIRECTORATE / KAYSERİ	BETWEEN KAYSERİ DEVELİ PROVINCE HIGHWAY - HİSARCIK AYR-DEVELİ CONSTRUCTION OF EMERGENCY ESCAPE RAMP	11.11.2019	1.873.000,00
5	ÜSKÜDAR MUNICIPALITY DIRECTORATE	ÜSKÜDAR DISTRICT YEAR 2020 ASPHALT LAYING, COMPRESSING, TRANSPORTATION AND ASPHALT ROAD LINING WORK WITH FINISHERS	20.5.2020	4.373.000,00



CERTIFICATE



ISO 9001:2015

YBM CERTIFICATION CERTIFICATE

DOGAN INSAAT ASFALT VE TICARET LIMITED SIRKETI

ADDRESS: YALI MAH. TOPSELVI CD. NO: 100/B MAI RESIDENCE K: 13 D: 113 KARTAL/ISTANBUL, TURKEY

Has established a quality management system that is in compliance with the International Quality Management System Standard

ISO 9001:2015

With a scope of
HIGHWAY WORKS, INFRASTRUCTURE, SUPERSTRUCTURE, BRIDGE, VIADUCT AND
TUNNEL CONSTRUCTION WORKS

TURKAK BDS NO	Certificate No:	Date of Initial Issue:	Certificate Expiry Date:
YS-1FCA-A6EE	Y 1494	07/OCT/2016	06/OCT/2021
[TURKAK EMPLEM]	EA Code	Issue Date of This Certificate/Rev. No	Certification Period
Quality Management System TS EN ISO IEC YS / AB-0051-YS	28	16/SEP/2020/06	07/OCT/2019-06/OCT/2022

The Certificate Validation process can be done with mobile devices, by scanning the QR Code on the document or by using the "TURKAK BDS No" and the <https://tbds.turkak.org.tr> document verification system.

[OFFICIAL SEAL]

Zuhtu Ozdemir
GENERAL MANAGER
[signature]

This certificate is effective if it is complied with the certification rules of YBM and periodic surveillance audits are completed successfully. Please call us efor more information.

Yönetim Belgelendirme Merkezi Test ve Gözetim Hizmetleri Ltd. Sti.
(Management Certification Center Test and Inspection Services Limited Liability Company)
Address: Telsiz Mah. Gul Sok. No: 1-3, Kat: 1 D: 4 Zeytinburnu/Istanbul, Turkey Tel: 0090 (212)5473100, e-mail: info@ybm.com.tr



ISO 14001:2015

YBM CERTIFICATION CERTIFICATE

DOGAN INSAAT ASFALT VE TICARET LIMITED SIRKETI

ADDRESS: YALI MAH. TOPSELVI CD. NO: 100/B MAI RESIDENCE K: 13 D: 113 KARTAL/ISTANBUL, TURKEY

Has established an environmental management system that is in compliance with the International Quality Management System Standard

ISO 14001:2015

With a scope of
HIGHWAY WORKS, INFRASTRUCTURE, SUPERSTRUCTURE, BRIDGE, VIADUCT AND
TUNNEL CONSTRUCTION WORKS

TURKAK BDS NO	Certificate No:	Date of Initial Issue:	Certificate Expiry Date:
YS-884E-EB9C	E 1177	27/SEP/2019	26/SEP/2021
[TURKAK EMPLM]	EA Code	Issue Date of This Certificate/Rev. No	Certification Period
Quality Management System TS EN ISO/IEC 17021/AB-0051-YS	28	16/SEP/2020/01	27/SEP/2019-26/SEP /2022

The Certificate Validation process can be done with mobile devices, by scanning the QR Code on the document or by using the "TURKAK BDS No" and the <https://tbds.turkak.org.tr> document verification system.

[OFFICIAL SEAL]

Zuhtu Ozdemir
GENERAL MANAGER
[signature]

This certificate is effective if it is complied with the certification rules of YBM and periodic surveillance audits are completed successfully. Please call us efor more information.

Yönetim Belgelendirme Merkezi Test ve Gözetim Hizmetleri Ltd. Sti.
(Management Certification Center Test and Inspection Services Limited Liability Company)
Address: Telsiz Mah. Gul Sok. No: 1-3, Kat: 1 D: 4 Zeytinburnu/Istanbul, Turkey Tel: 0090
(212)5473100, e-mail: info@ybm.com.tr



OHSAS 18001:2007

YBM CERTIFICATION CERTIFICATE

DOGAN INSAAT ASFALT VE TICARET LIMITED SIRKETI

ADDRESS: YALI MAH. TOPSELVI CD. NO: 100/B MAI RESIDENCE K: 13 D: 113 KARTAL/ISTANBUL, TURKEY

has established that is in compliance with the Occupational Health and Safety Management System Standard

OHSAS 18001:2007

With a scope of
HIGHWAY WORKS, INFRASTRUCTURE, SUPERSTRUCTURE, BRIDGE, VIADUCT AND
TUNNEL CONSTRUCTION WORKS

Certificate No: O 1170

Category Code: 28

Date of Initial Issuance: 27/SEP/2019

Issue Date of This Certificate/Rev. No: 16/SEP/2020-01

Certificate Expiry Date: 26/SEP/2021

Recertification date: 26/SEP/2022

[OFFICIAL SEAL]

Zuhtu Ozdemir
GENERAL MANAGER

[signature]

This certificate is effective if it is complied with the certification rules of YBM and periodic surveillance audits are completed successfully. Please call us efor more information.

Yönetim Belgelendirme Merkezi Test ve Gözetim Hizmetleri Ltd. Sti.

(Management Certification Center Test and Inspection Services Limited Liability Company)

Address: Telsiz Mah. Gul Sok. No: 1-3, Kat: 1 D: 4 Zeytinburnu/Istanbul, Turkey Tel: 0090

(212)5473100, e-mail: info@ybm.com.tr



ISO 45001:2018

YBM CERTIFICATION
CERTIFICATE

DOGAN INSAAT ASFALT VE TICARET LIMITED SIRKETI

ADDRESS: YALI MAH. TOPSELVI CD. NO: 100/B MAI RESIDENCE K: 13 D: 113 KARTAL/ISTANBUL, TURKEY

has established that is in compliance with the Occupational Health and Safety Management System
Standard

ISO 45001:2018

With a scope of
HIGHWAY WORKS, INFRASTRUCTURE, SUPERSTRUCTURE, BRIDGE, VIADUCT AND
TUNNEL CONSTRUCTION WORKS

Certificate No: OHSM1037

Issue Date of This Certificate/Rev. No: 16/SEP/2020/00

Category Code: 28

Certificate Expiry Date: 15/SEP/2021

Date of Initial Issuance: 16/SEP/2020

Recertification date: 15/SEP/2023

UAF-UNITED ACCREDITATION FOUNDATION

[OFFICIAL SEAL]

CB-OHSMS-1607

Zuhtu Ozdemir
GENERAL MANAGER
[signature]

This certificate is effective if it is complied with the certification rules of YBM and periodic
surveillance audits are completed successfully. Please call us efor more information.

Yönetim Belgelendirme Merkezi Test ve Gözetim Hizmetleri Ltd. Sti.
(Management Certification Center Test and Inspection Services Limited Liability Company)
Address: Telsiz Mah. Gul Sok. No: 1-3, Kat: 1 D: 4 Zeytinburnu/Istanbul, Turkey Tel: 0090
(212)5473100, e-mail: info@ybm.com.tr



COMPLETED PROJECT PHOTOS

